



GEORGIA
QUALITY
IMPROVEMENT
PROGRAM

Trauma Center Spotlight



Piedmont Henry Hospital



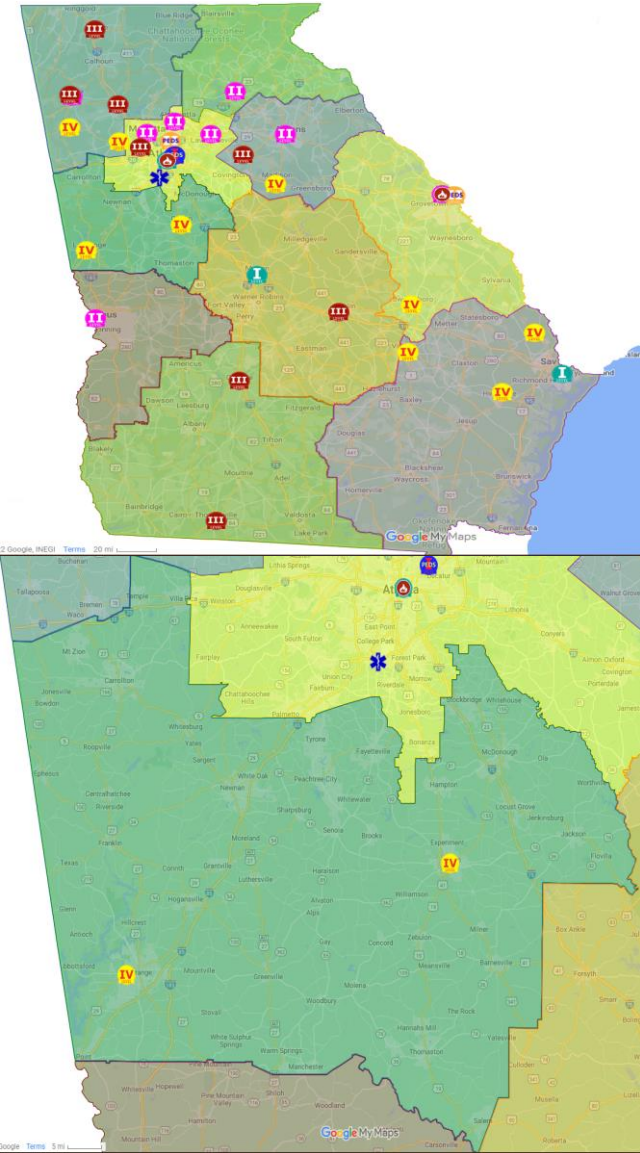
- State Designated Level III Trauma center
 - Located in Stockbridge Georgia (Region 4)
 - 259 Bed Acute Care Hospital
 - 40+ years of service to Citizens of Henry County and Surrounding areas.
 - Offering services in Emergency, Medical / Surgical, Obstetrics / Women's, Level III NICU, Obstetrical ED
 - 80,000+ ED Visits per year
 - 1600+ Employees
-

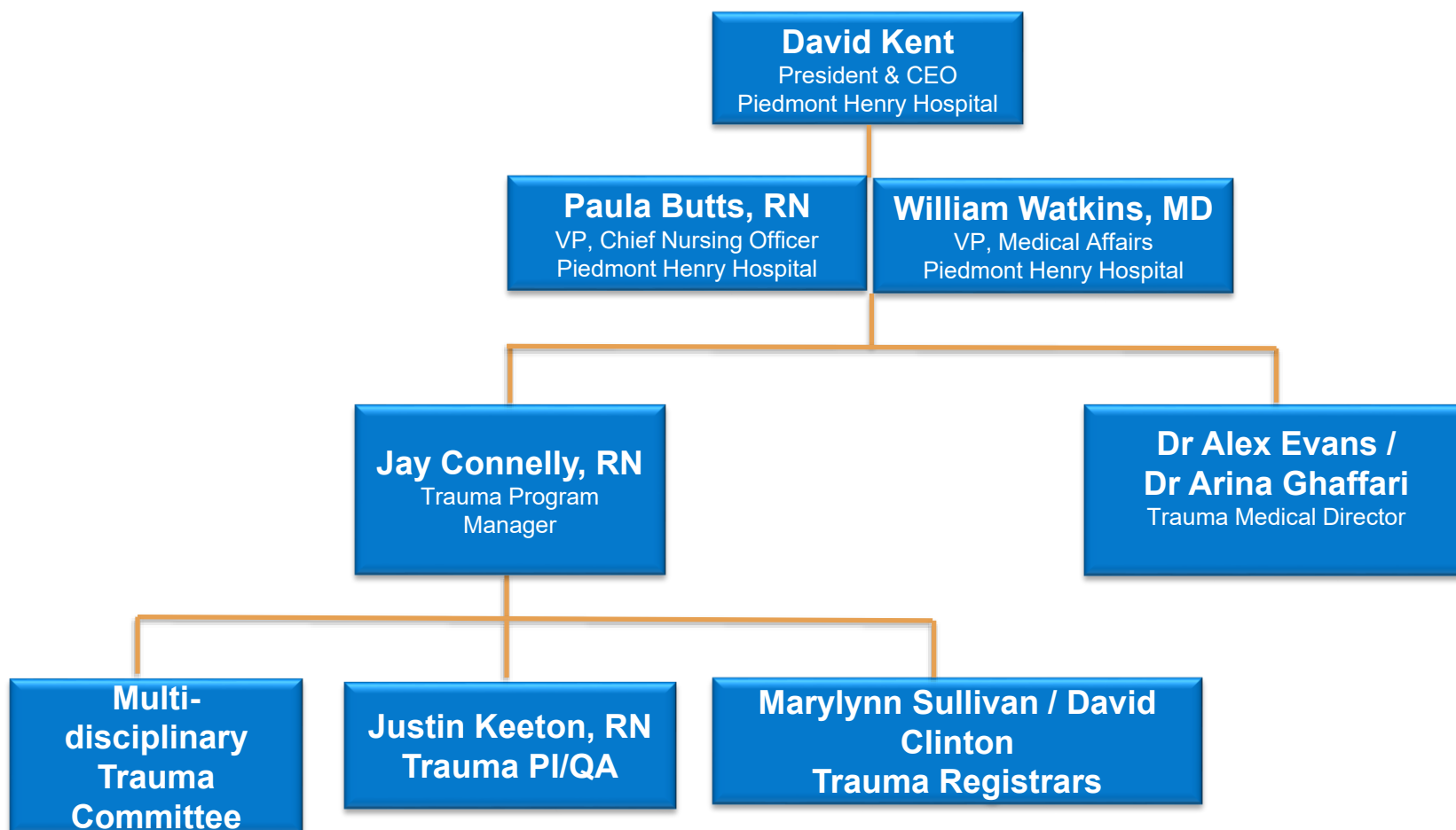
Why Henry?



GEORGIA
QUALITY
IMPROVEMENT
PROGRAM

- Geographic need
- Region need
- State wide challenges with access to trauma care
- High volume / High Acuity ED
- The citizens of Henry and surrounding counties deserve it!!!



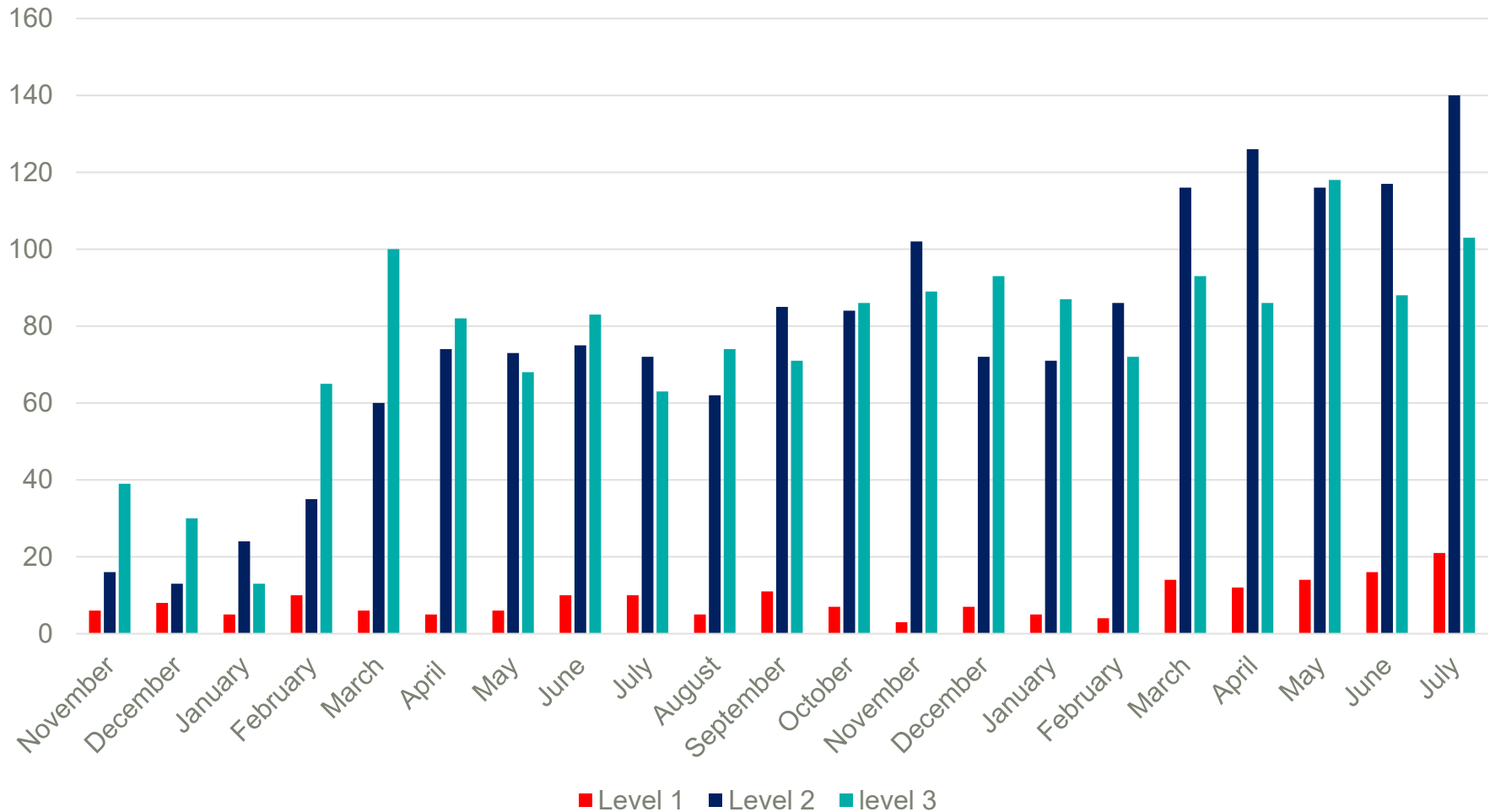


Total Volume (2021-2023)



GEORGIA
QUALITY
IMPROVEMENT
PROGRAM

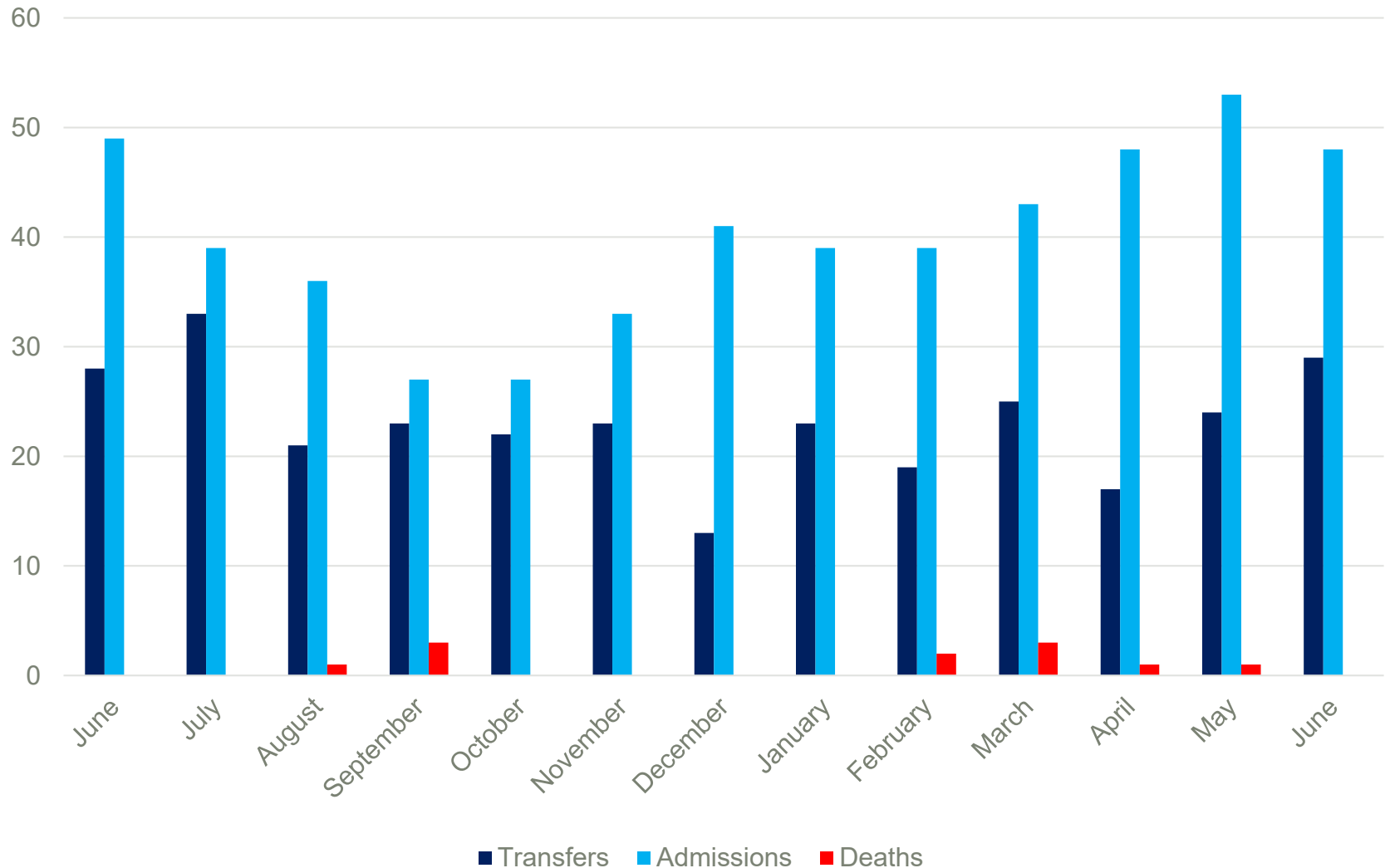
Trauma Activations ED Dot Phrase



Admission, Transfer, Death



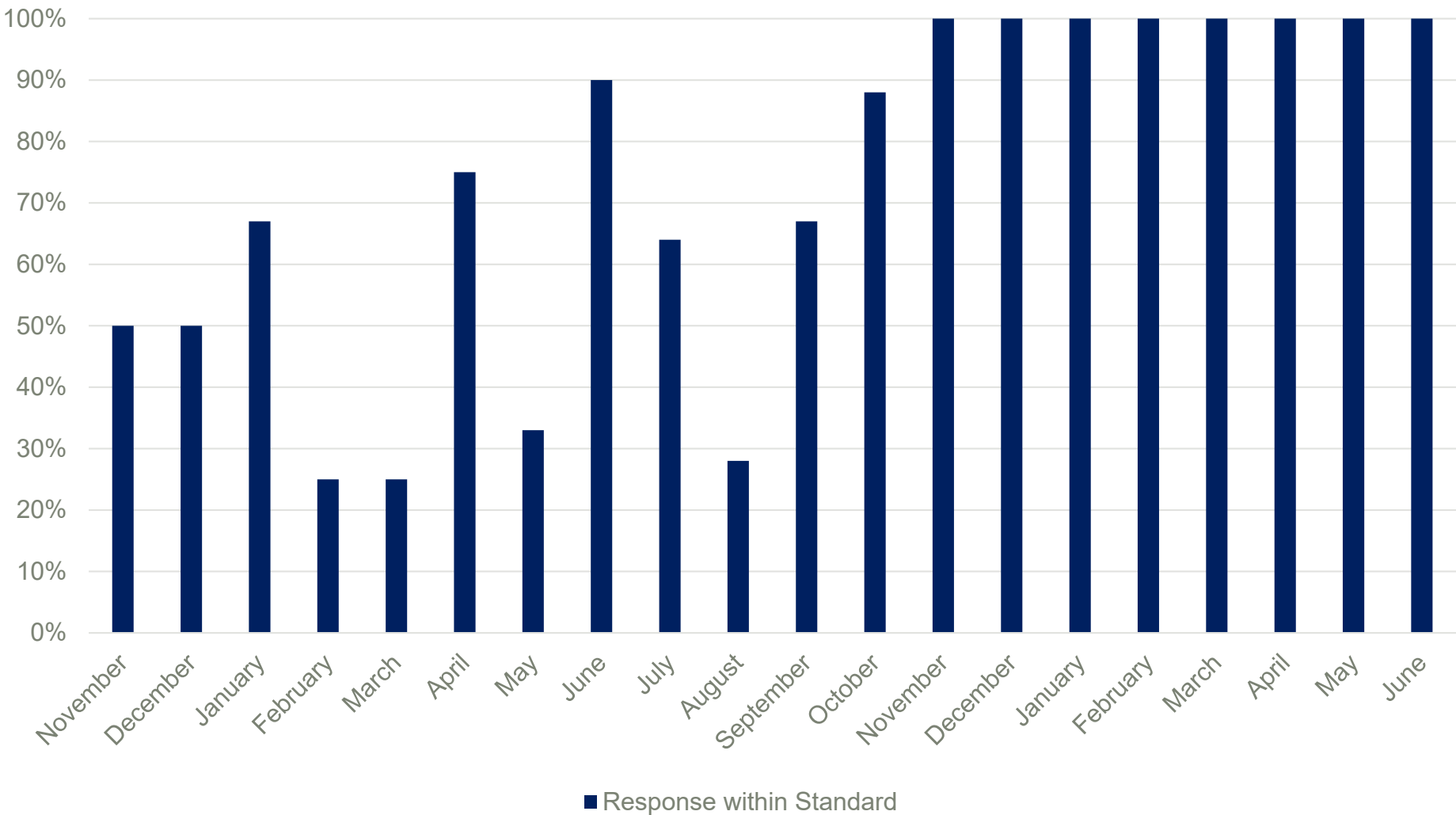
GEORGIA
QUALITY
IMPROVEMENT
PROGRAM



Surgical Response



GEORGIA
QUALITY
IMPROVEMENT
PROGRAM



Program Initiatives



- Administrative Support
 - Building the team
 - TNCC, TNS, TCAR
 - FAST training for ED Providers
 - Trauma room re-design (Step 2 planning)
 - Blood products in Trauma Room
 - Trauma Order sets and Narrator Utilization
 - Silent Hip
 - Ambulance Purchase
 - Dedicated Surgical Program (ACS and Trauma)
-

Challenges



GEORGIA
QUALITY
IMPROVEMENT
PROGRAM

- Reacting to volume growth
- Space
- Stabilizing surgical group
- Growing and learning every day

WHY?



Pre-hospital notification of Level 1 trauma activation. 15 year old male with possible GSW to the abdomen. Single wound noted. VSS and attempting IV access. Surgeon and ED team at bedside upon arrival. Initial evaluation reveals single wound approximately 9 inches above the umbilicus. Complaints of diffuse abdominal pain. GCS of 15 and VSS on initial assessment. FAST completed and positive with vital sign changes. Plan to complete emergent laparotomy and repair injury.

While in surgery an evacuation of hematoma, cholecystectomy, hepatic resection section 4&5, duodenoplasty x2, partial nephrectomy and colon perforation repair. Stabilized and transportation then arranged for admission to Eggleston.