

# Cardiff Model for Violence Prevention Organizational Readiness Project

Daniel Wu, MD

Chief of Emergency Medicine, Interim, Grady Health System

Chief Medical Information Officer, Grady Health System

Associate Professor, Emergency Medicine, Emory University

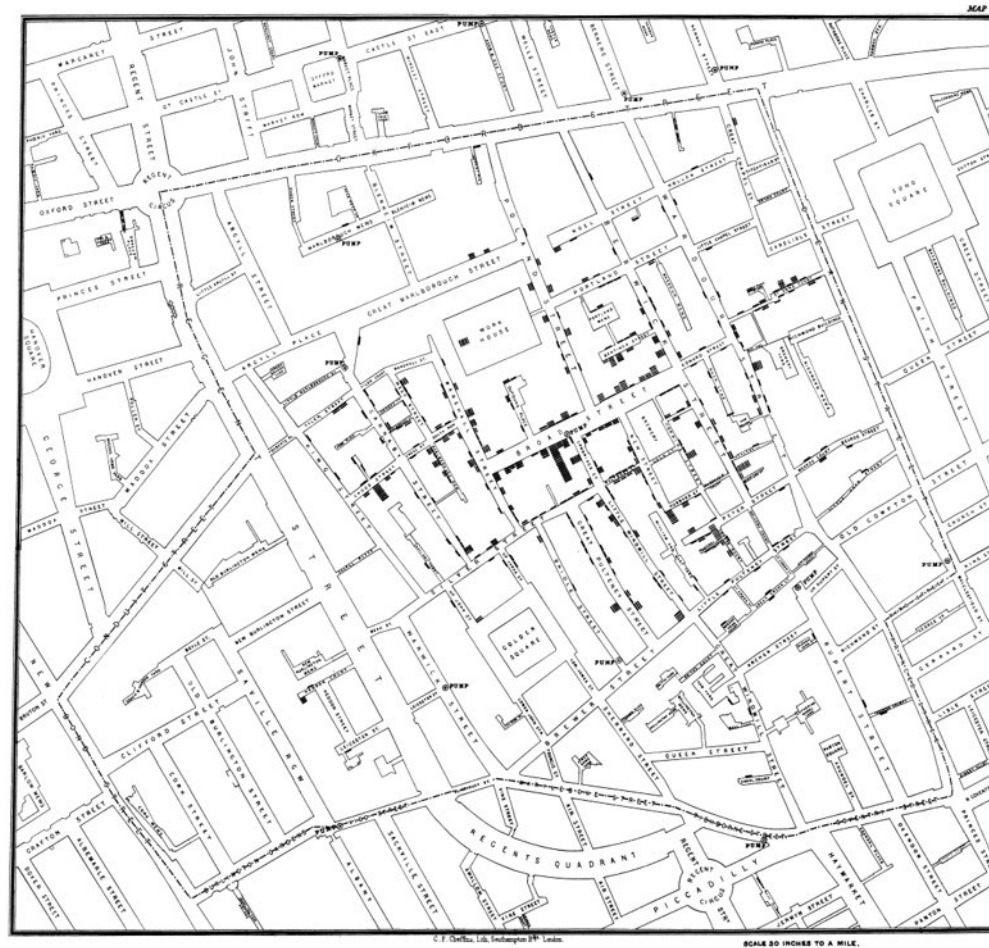


EMORY  
UNIVERSITY  
SCHOOL OF  
MEDICINE

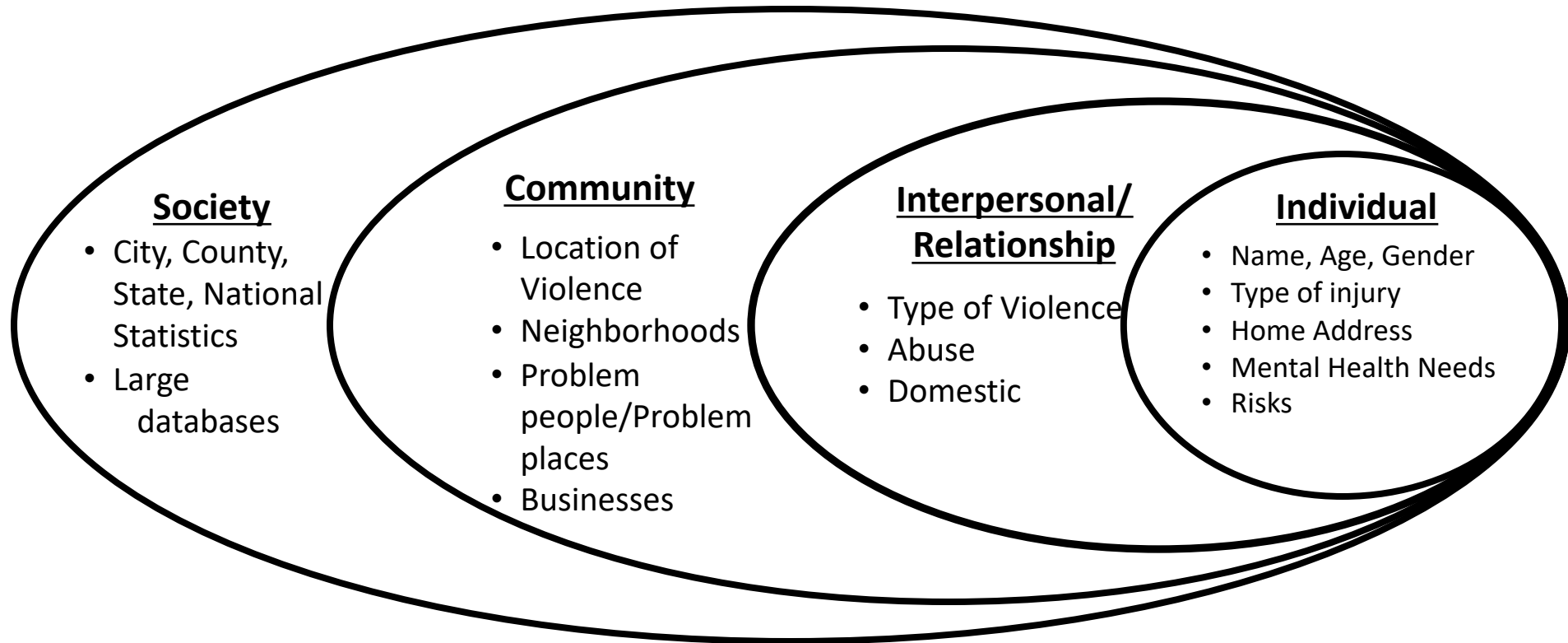
Injury Prevention Research  
Center at Emory



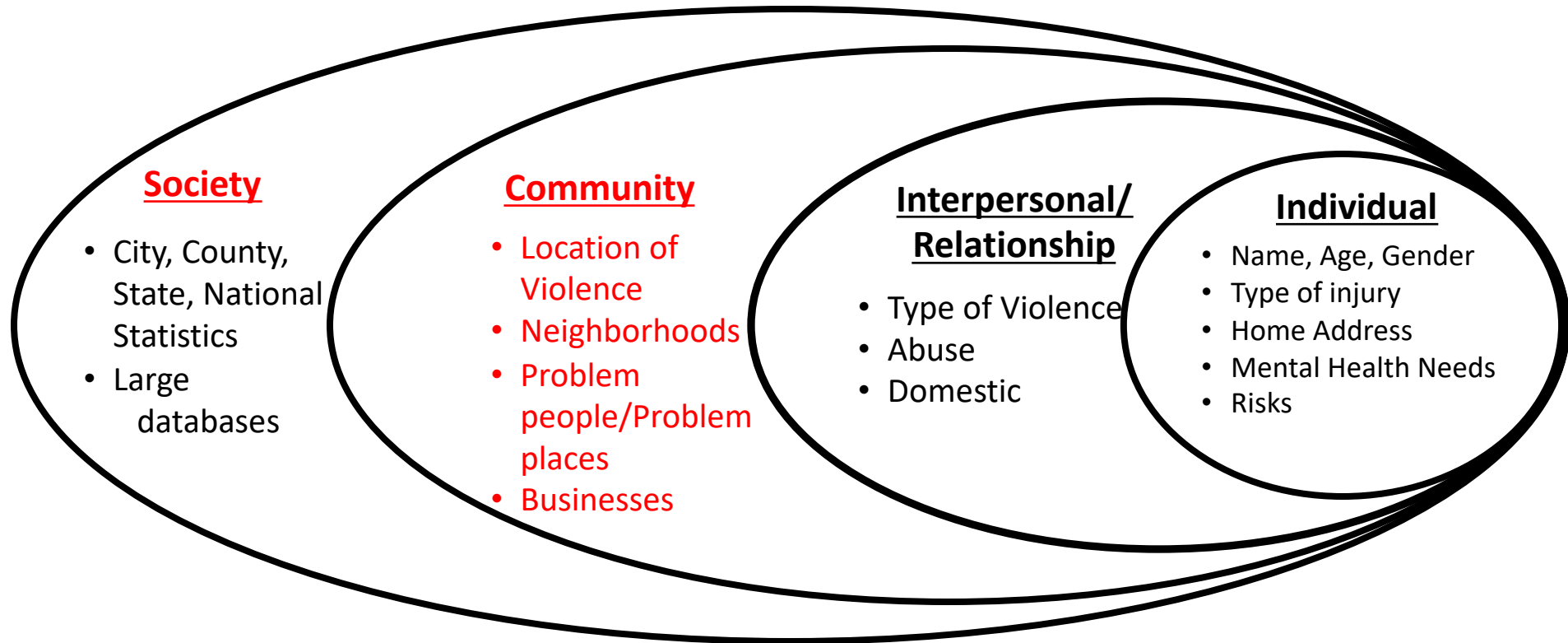
# Location, Location, Location!



# Data → Information → Knowledge → Interventions



# Data → Information → Knowledge → Interventions



# Cardiff Model for Violence Prevention - Background

## ❑ Violent Injury Surveillance System

- Combining hospital and law enforcement data for a better picture of community violence

## ❑ Cross-Sectoral Partnership

- Hospitals, Law Enforcement and Community partners join together for a public health approach to violence

## ❑ Community Level Intervention

- Data-driven violent injury hotspot approach to identify community level interventions

## ❑ Results

- Research has shown significant violence-related hospital admission reductions and cost-savings to health and justice systems
- Adopted by the NHS 1998 Crime and Disorder Act mandating health system-law enforcement partnerships





January 2019

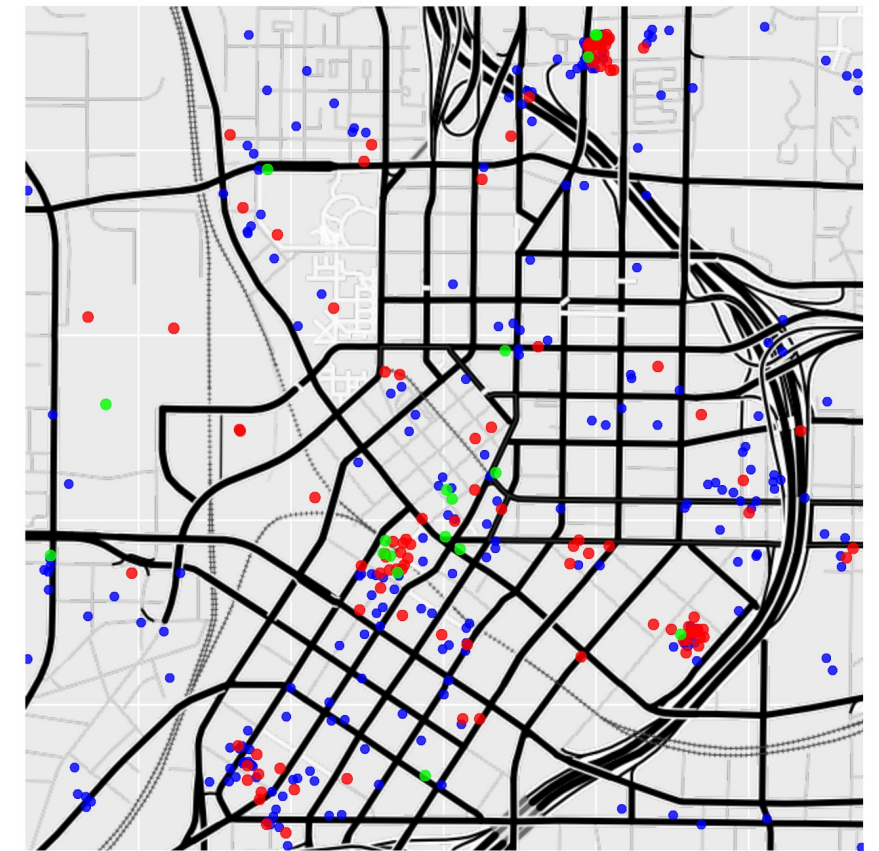
# Proportion of Violent Injuries Unreported to Law Enforcement

Daniel T. Wu, MD<sup>1,2</sup>; Jasmine C. Moore, MPH<sup>1</sup>; Daniel A. Bowen, MPH<sup>3,4</sup>; et al



- 2015-2017
- Atlanta partnership
  - Grady, DKPD, CDC
- 150K patients screened
- Interventions
- Findings
  - Unreported to Police
    - Over 90%
    - Over 80%

JAMA  
Internal Medicine



● Both Emergency Department and Police Data ● Emergency Department Only ● Police Department Only



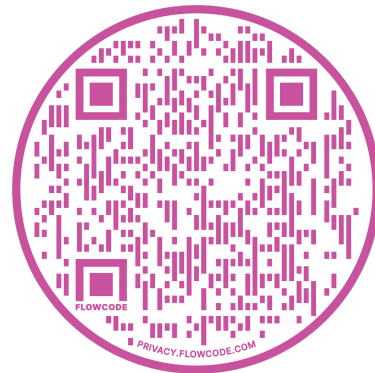
## Violence Prevention

CDC > Injury Center > Violence Prevention > About Us > Funded Programs and Initiatives  
> The Cardiff Violence Prevention Model

🏠 Violence Prevention

# The Cardiff Model Toolkit

<https://www.cdc.gov/violenceprevention/publichealthissue/fundedprograms/cardiffmodel/toolkit.html>



**THE CARDIFF MODEL**

OVER **50%** OF VIOLENT CRIME IS NEVER REPORTED TO LAW ENFORCEMENT

Combining hospital and law enforcement data helps communities to better understand where violence happens and create local solutions.

**MOST VIOLENCE IS HIDDEN**

**COLLABORATION BETWEEN**

- HOSPITALS**
- HEALTH DEPARTMENTS**
- LAW ENFORCEMENT**
- COMMUNITY**

**CAN HELP PINPOINT SPECIFIC AREAS THAT HAVE THE GREATEST NEED FOR LOCAL SOLUTIONS.**

**THE CARDIFF MODEL HAS LED TO A 42% DECREASE IN VIOLENT INJURY HOSPITAL ADMISSIONS IN THE U.K.**

Visit the Cardiff Model toolkit for more information:  
[www.cdc.gov/violenceprevention/fundedprograms/cardiffmodel](https://www.cdc.gov/violenceprevention/fundedprograms/cardiffmodel)

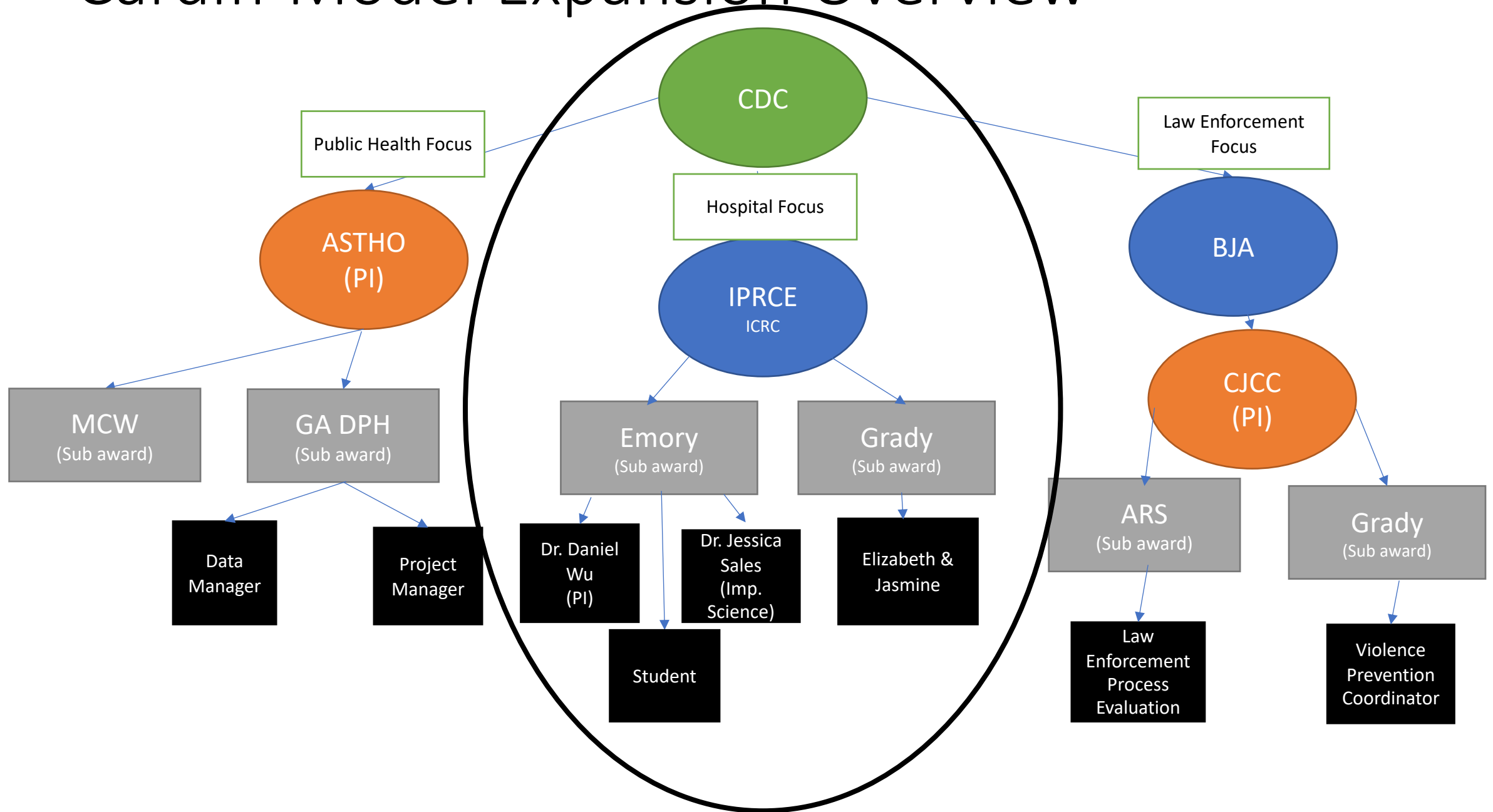
This material was developed by the Centers for Disease Control and Prevention (CDC). The pilot of the Cardiff Violence Prevention Model was a collaboration between the CDC, Sefton County Police Department, Grady Health System, the University of Pennsylvania, and the CDC Foundation. Support for this pilot was provided by the Robert Wood Johnson Foundation.

# USIPP today





# Cardiff Model Expansion Overview



# NATIONAL CARDIFF NETWORK

## Participating Cities

Kick off meeting – Feb 25,2021

### VISION STATEMENT:

*To build, expand, and support the Cardiff Model as a multi-sectoral, community, place-based approach to reduce injury and violence across the United States*

Atlanta,GA

Milwaukee/West Allis,WI

Denver, CO

St Louis, MO

Tacoma, WA

Albany, GA

Chicago,IL

Philadelphia, PA

New Jersey

Las Vegas, NV

Lauderhill, FL

Evanston, IL

Queens, NY

Minneapolis, MN

Springfield, IL

# Cardiff Model Readiness Study

- Perform organizational readiness assessment of hospital within a statewide trauma system
- Consolidated Framework for Implementation Research (CFIR)
- AIMS:
  - Identify existing barriers for trauma hospital implementation
  - Identify existing barriers for law enforcement implementation
  - Identify cross-sectoral practices amongst hospitals, LE, and community groups to support creation of partnerships



EMORY  
UNIVERSITY  
SCHOOL OF  
MEDICINE

Injury Prevention Research  
Center at Emory



# The Ask

- Virtual participation in study
- Focus groups
  - Relevant hospital stakeholders (e.g. Physicians, Nursing, IT, Hospital Leadership, Community outreach)
- Individual Interviews
  - Key trauma program staff (e.g injury prevention coordinator, trauma directors)



EMORY  
UNIVERSITY  
SCHOOL OF  
MEDICINE

Injury Prevention Research  
Center at Emory





# Outcomes

- Inform the first state-wide Cardiff Model effort
- Inform the continued development of CDC Cardiff toolkit
- Scholarship opportunities
- Addressing violence as a top mechanism of ACS verification
- Provide participating hospitals with a personalized assessment of their ability to implement Cardiff



EMORY  
UNIVERSITY  
SCHOOL OF  
MEDICINE

Injury Prevention Research  
Center at Emory



# THANK YOU!

Daniel Wu, MD – [dtwu@emory.edu](mailto:dtwu@emory.edu)

Jasmine Moore, MPH – [jusher@gmh.edu](mailto:jusher@gmh.edu)

Elizabeth Williams, MPH – [eiwilliams@gmh.edu](mailto:eiwilliams@gmh.edu)

Gretchen Baas, MPH

Natalie Vaziri

Jessica Sales, PhD



EMORY  
UNIVERSITY  
SCHOOL OF  
MEDICINE

Injury Prevention Research  
Center at Emory

