



**NORTHSIDE  
HOSPITAL**

GWINNETT

**TRAUMA  
SERVICES**

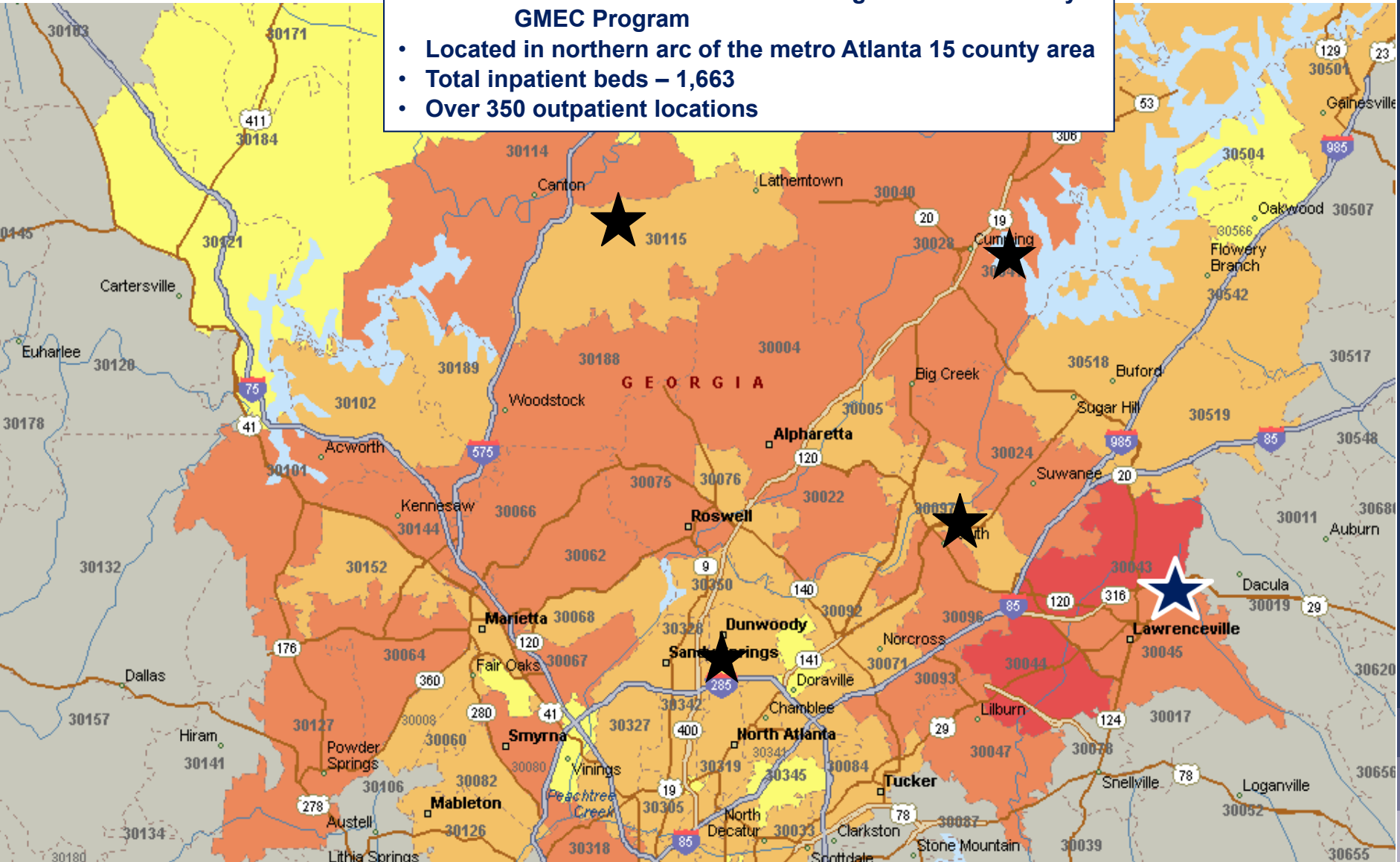
*A Community of Care. Close to Home.*

**Trauma Center Spotlight Summer 2023**



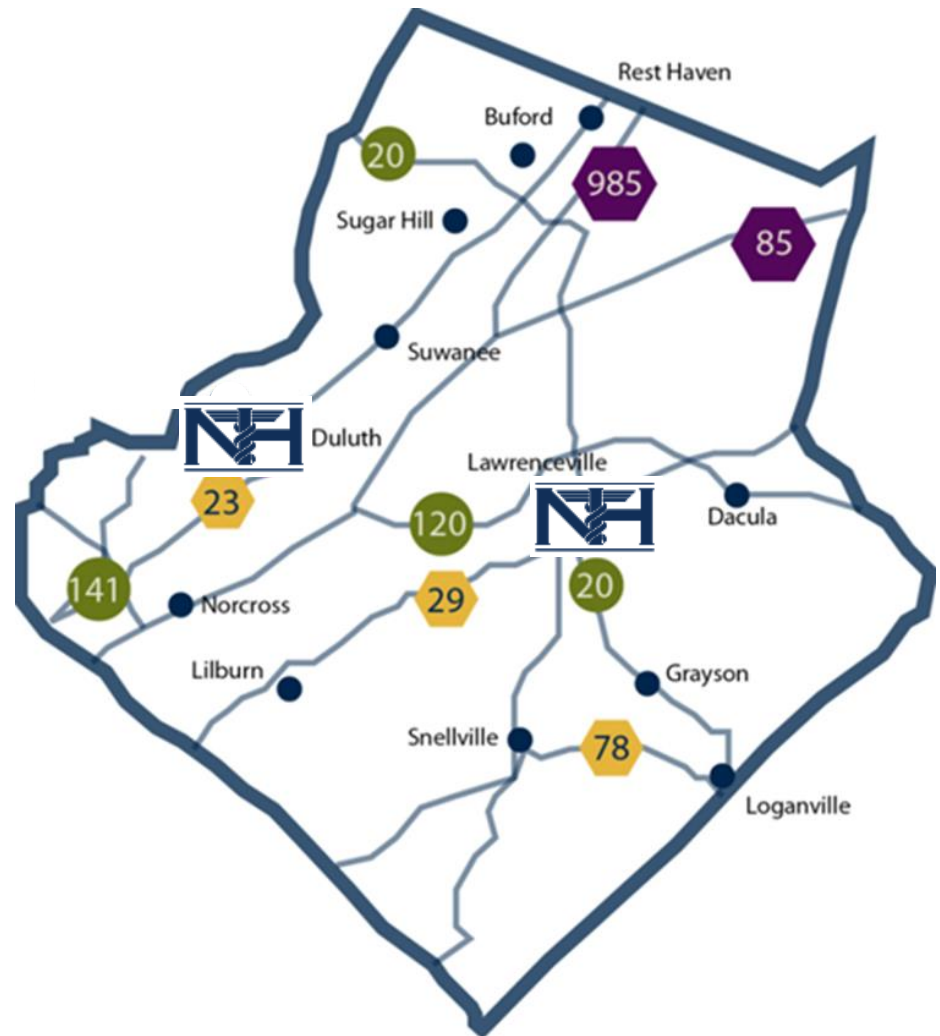
- GMEC Program**

  - Located in northern arc of the metro Atlanta 15 county area
  - Total inpatient beds – 1,663
  - Over 350 outpatient locations

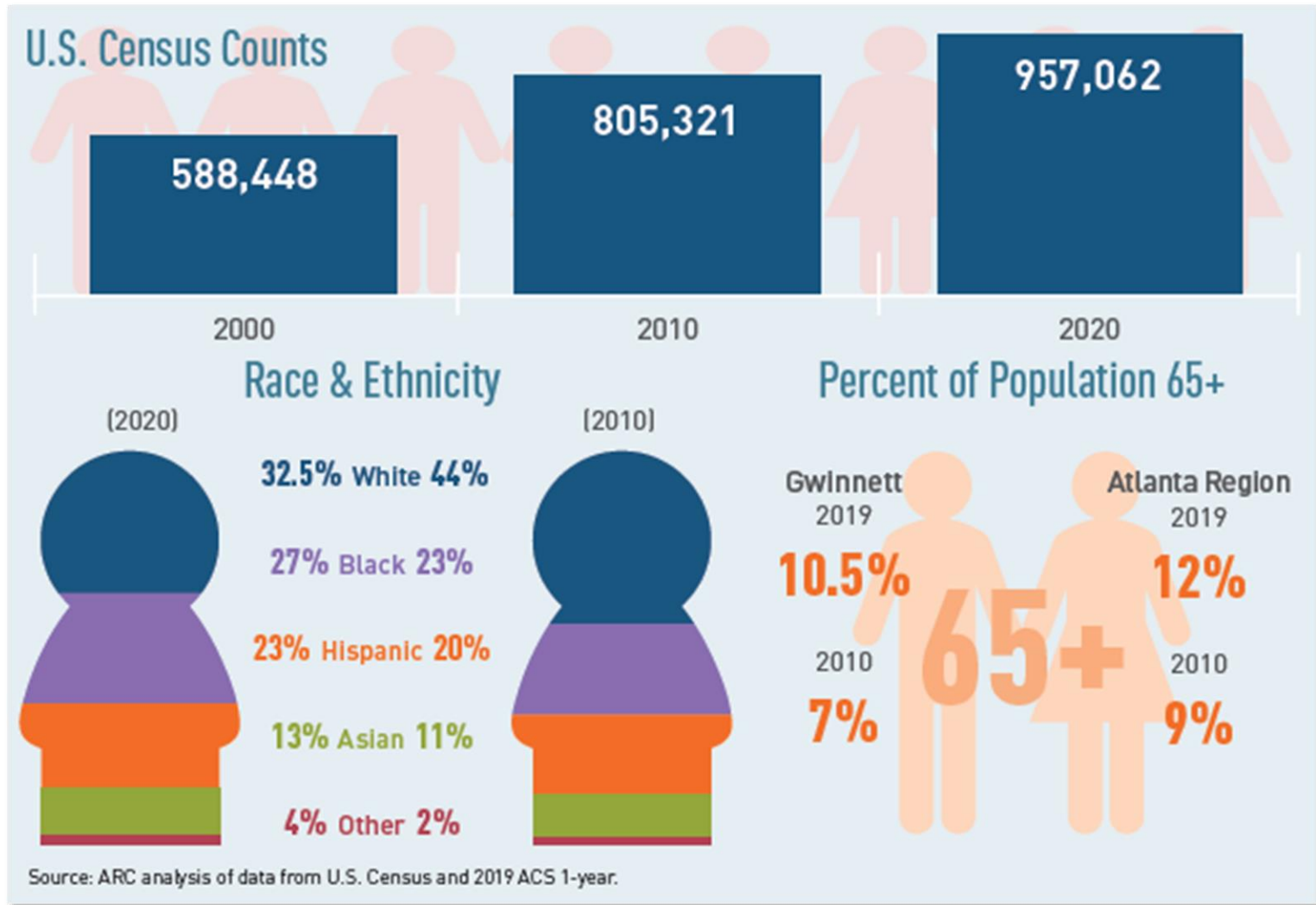


# 2022 Gwinnett County Census Demographics

- 430 square miles
- Population of 975,353, up 1.9% from 2020



# Population by Race and Ethnicity





# Gwinnett County

## 2022 Socioeconomic Statistics



- High School Diploma **87.9%**
- Bachelor degree or higher **38.5%**
- Persons per household **3.01**
- Average household income **\$75,853**
- Below poverty level **10.8%**
- 65 years and older **11.5%**
- 18 year and younger **25.7%**

# Northside Hospital Gwinnett Profile

- Volumes FY 2022 (October 1, 2021 – September 30, 2022)
  - ED Visits – 89,148
  - Inpatient Acute Care Adult Days –140,683
  - Total Inpatient and Outpatient Surgeries – 14,703
  - Deliveries – 4,123
- Seven Oncology Infusion Centers
- Five Outpatient Radiology Centers
- Two Graduate Medical Education Clinics
- Staff Members
  - Over 1,300 Medical Staff members
  - Over 4,300 hospital staff members



# Northside Hospital Gwinnett Profile

- 436 beds as of 5/11 – all private rooms with telemetry

Intensive Care – 60 beds

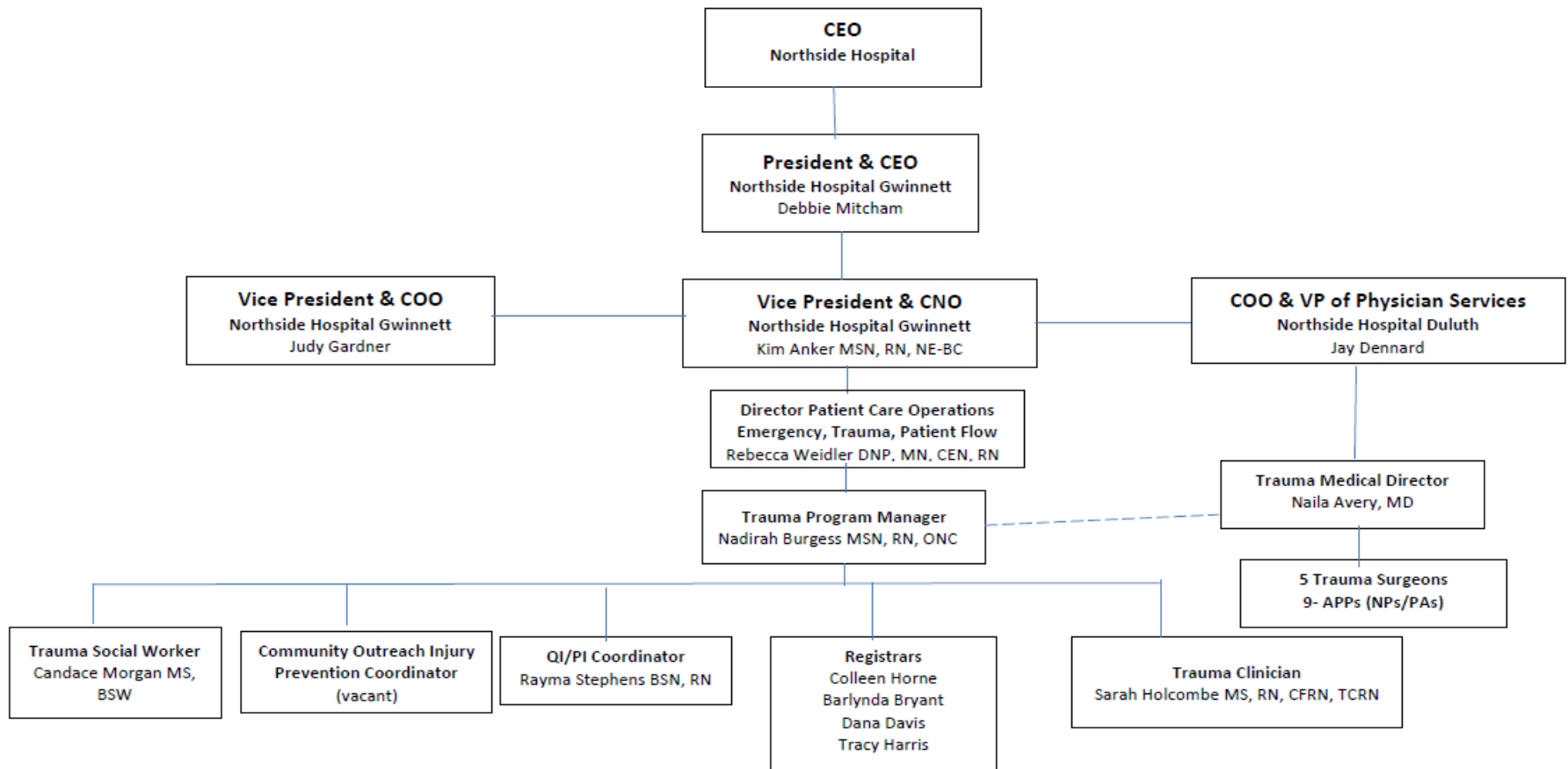
Acute Care (medical/ surgical/ OB) – 376 beds

- Operating Rooms – 27
- Emergency Department – 125 beds
- Women's Center – 49 beds
  - NICU Level III – 16 ICU beds and 8 intermediate
  - Nursery – 40 beds.

# Northside Hospital Gwinnett Trauma Team

## Northside Hospital

July 1, 2023





# Northside Hospital Gwinnett Trauma Medical Director

## Naila Avery, M.D.

- University of Louisville School of Medicine – 2004
- Residency – General Surgery
  - University of Illinois Metropolitan Group Hospitals, 2009
- Fellowships
  - Surgical Critical Care - Advocate Illinois Masonic Medical Center, 2010



Dr. Naila Avery

# Northside Hospital Gwinnett Trauma Program Manager

## Nadirah Burgess, RN

### – Undergraduate

- Georgia Baptist College of Nursing of Mercer University 2002

### – Graduate

- Georgia State University 2009
- Dual degree Adult Health Clinical Nurse Specialist/Nurse Practitioner



Nadirah Burgess, Trauma  
Program Manager

# Northside Hospital Gwinnett Trauma Team



Dr. Naila Avery



Dr. Romeo Massoud



Dr. Patrick Mc Gann



Dr. Jeffrey Nicholas



Dr. Luttrell Toussaint

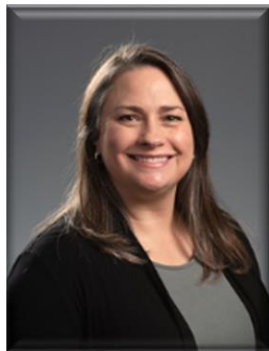


Dr. Uy Vu

# Northside Hospital Gwinnett Trauma Team



Barlynda Bryant,  
Trauma Registrar



Dana Davis,  
Trauma Registrar



Tracy Harris,  
Trauma Registrar



Colleen Horne,  
Trauma Registrar



Nadirah Burgess, Trauma  
Program Manager



Candace Morgan, Trauma  
Social Worker



Sarah Holcombe,  
Trauma Clinician



Rayma Stephens,  
PI Coordinator

# Northside Hospital Gwinnett Trauma Team



Yelitza Guzman, NP



Stephen Lewis, PA



Sarah Nash, PA



Krystal Knight, NP



Jannette Porter, NP



Fauziya Ali, NP



Katy Steele, PA



Rahul Kapoor, PA



Nurin Ghazzawi, PA

# Northside Hospital Gwinnett Trauma Program

- Transformative changes since our Merger between Northside Hospital and Gwinnett Medical Center
- Administrative and Medical Staff support
  - Redesigned the trauma program
    - TMD and TPM
  - 23 FTE's
    - 6 Trauma Surgeons
    - 9 APP's
    - 1 Trauma PI Coordinator
    - 4 Registrars
    - 1 Trauma Education & Community Outreach Coordinator
    - 1 Clinician/ Educator
    - 1 Social Worker





# Northside Hospital Gwinnett Trauma Program

## Enhancements

- Development of a robust PIPs program
- Fully revised trauma PI process
  - All activities monitored by the TMD and TPM through the PIPs program
- Trauma surgeon involvement in transfers and diversion
- Activation policy enhanced to require clearly defined response times for all levels of activation
- Expansion of trauma practice management guidelines

# Northside Hospital Gwinnett Trauma Program

## Additional Enhancements (cont.)

- Two surgical teams in house seven days a week
- In house 24/7 MRI coverage
- Enhancements of the SBIRT screening and intervention process
- Prioritization guidelines for operating room availability for musculoskeletal injuries to ensure consistent access 7 days a week

# Northside Hospital Gwinnett Trauma Program

## Additional Enhancements (cont.)

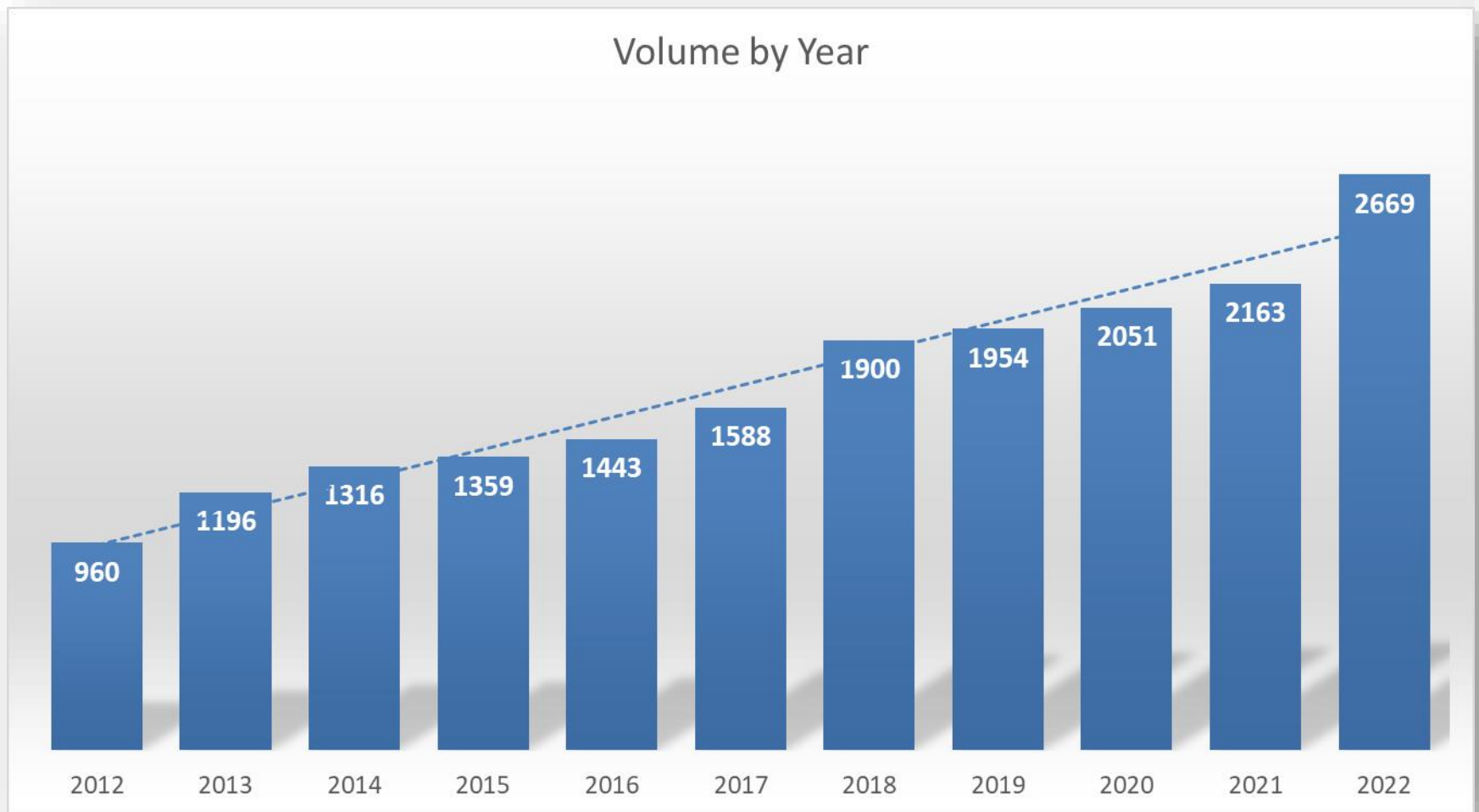
- Addition of FTEs in key areas to enhance efficiency of trauma care
- Phased expansion and renovation of the entire Emergency Department
- Added 81 inpatient beds to the facility
- Additional hospital tower (coming 2025)



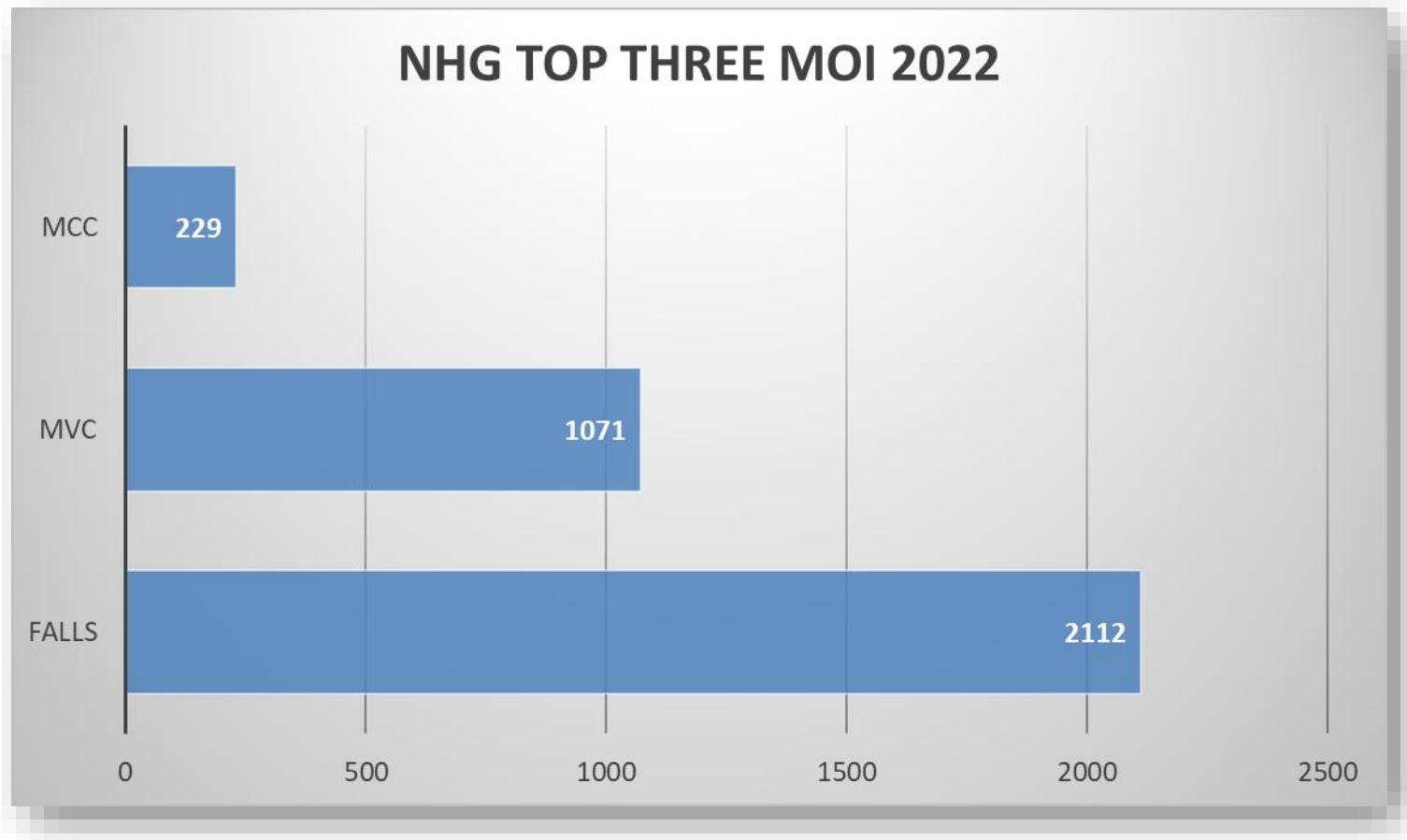
# Northside Hospital Gwinnett Data

*Volume and Statistics*

# Northside Hospital Gwinnett Data



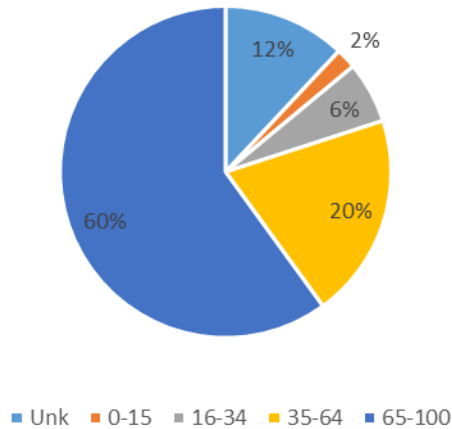
# Northside Hospital Gwinnett Trauma Program



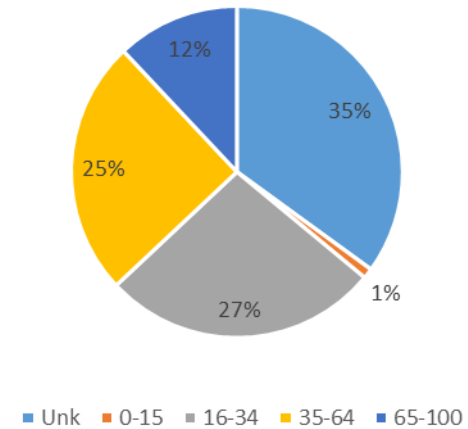


# Northside Hospital Gwinnett Trauma Program

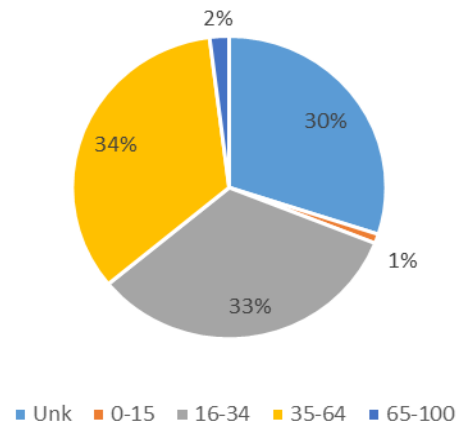
Age Distribution - FALLS



Age Distribution - MVC

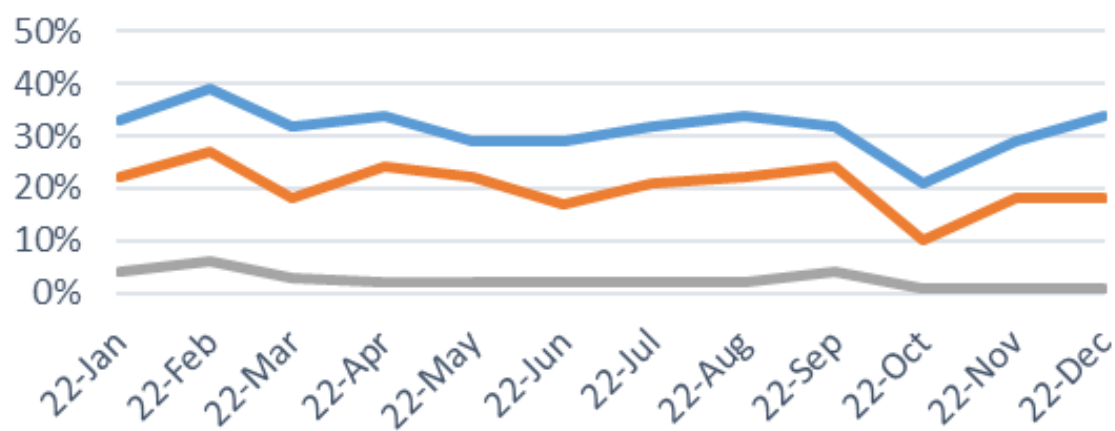


Age Distribution - MCC



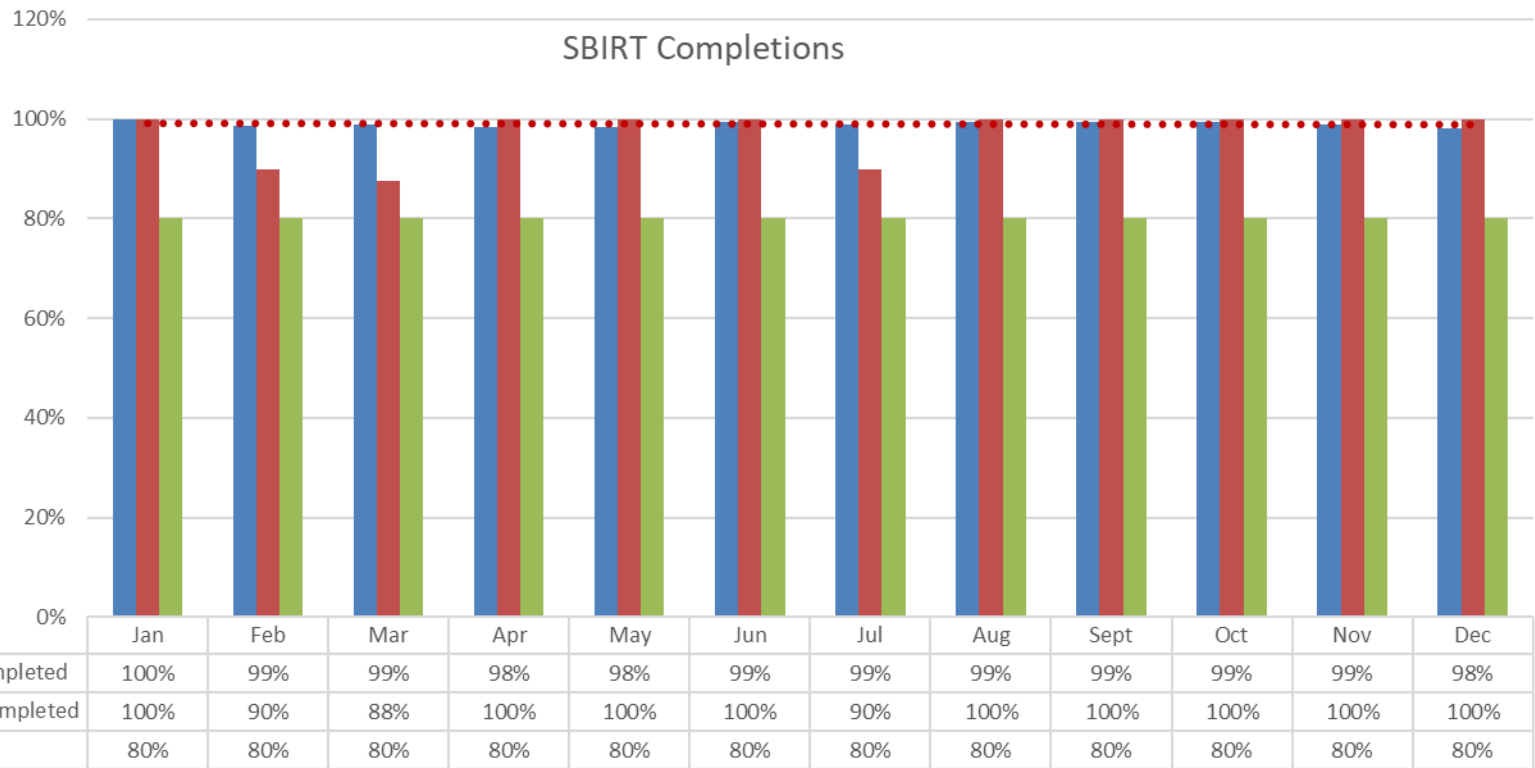
# Northside Hospital Gwinnett Data

## NSA 2022



	22-Jan	22-Feb	22-Mar	22-Apr	22-May	22-Jun	22-Jul	22-Aug	22-Sep	22-Oct	22-Nov	22-Dec
Before Review	33%	39%	32%	34%	29%	29%	32%	34%	32%	21%	29%	34%
Isolated Hip Excluded	22%	27%	18%	24%	22%	17%	21%	22%	24%	10%	18%	18%
After Review	4%	6%	3%	2%	2%	2%	2%	2%	4%	1%	1%	1%

# Northside Hospital Gwinnett Data



■ % alcohol screening completed

■ % brief interventions completed

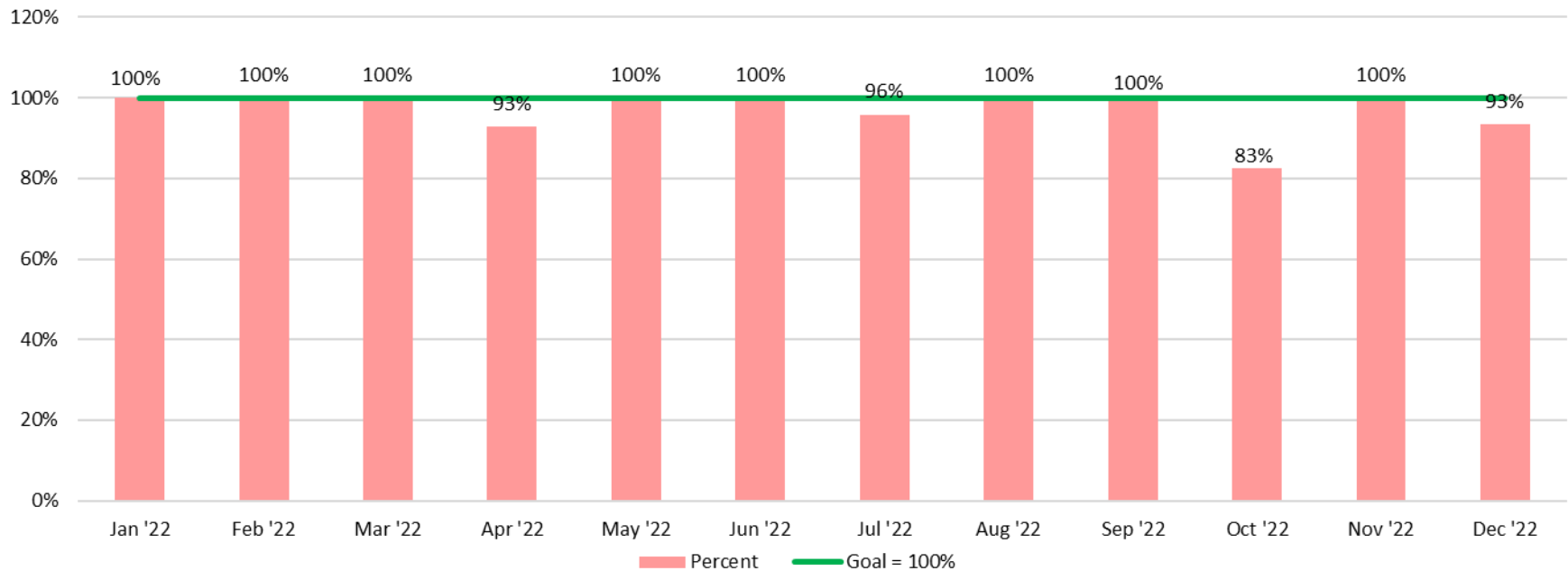
■ Target

..... Linear (% alcohol screening completed)



# Northside Hospital Gwinnett Data

**Antibiotics within 60 Minutes for Trauma Patients with Open Fractures**



# Northside Hospital Gwinnett Trauma Program

## Points of Pride:

- Receiving ACS Level II trauma center verification in 2022
- Best practice “Red Shirt” program with highly trained and skilled trauma nurse specialists with a greater than 86% retention rate
- Two trauma fellowship trained orthopedic surgeons
- Two OR teams available at all times with an operating room held open for trauma 24/7

# Northside Hospital Gwinnett Trauma Program

## Points of Pride (cont.):

- Engagement from multidisciplinary team
- Outreach and injury prevention is innovative
- Quality of PI activities improved and is robust
- Full support and participation from the specialty liaisons in PI
- Unprecedented institutional commitment to the growth and excellence of the trauma program



# Northside Hospital Gwinnett Expansion



THANK YOU  
FOR YOUR  
ATTENTION

Naila Avery, MD  
Trauma Medical Director

Nadirah Burgess MSN, RN, ONC  
Trauma Program Manager

