

What the AMM can do for you!

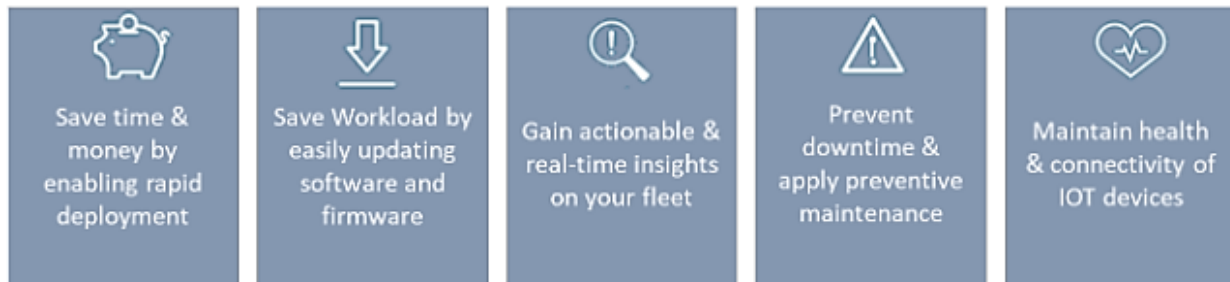
- You can access the AMM remotely at any time.
- The AMM can advise you if the MG90/OMG is functioning and online without having to manually check each device!
- The AMM will give you vehicle location.
 - If you need to know exactly where a unit is you can see it on a real time map!
 - The GPS signal from the MG90 can be sent to different MG90's back to the CAD.
 - Dispatch can also use the AMM to know which vehicle is closest to a scene.
- The AMM can give you coverage maps and trails. Which will map the wireless service accessed by the MG90.
- The AMM can be set up to send you alerts about performance problems.
- The AMM can monitor temperatures in drug boxes.
- The AMM also can give you vehicle telemetry!
 - With a Telemetry cable you can see the health of the vehicle and set up alerts to particular maintenance vehicle codes.
 - You can identify performance issues and prevent breakdowns. This can help save money and time for vehicle maintenance.

Cloud Based Network Management for Vehicle Deployments

AirLink® Mobility Manager (AMM) is a leading-edge, end-to-end network management solution that enables simplified, remote and real-time mass configuration, control and troubleshooting of all in-vehicle AirLink® routers and gateways, connected mobile assets and mission critical applications.

Available as a hosted service (for MG routers and gateways) and “in the enterprise” (for all AirLink routers and gateways), AMM displays a virtual dashboard with an up-to-date view of the entire fleet, and delivers a continuous stream of rich, real-time network data, allowing users to observe, track and examine the behavior of hundreds of devices, networks, and connected vehicle parameters as it occurs.

The AMM enables users to create custom alerts and event triggers, and offers on-demand or pre-scheduled historical reports for in-depth analysis and diagnostics. With its advanced vehicle tracking capabilities provided by the AirLink Tracker®, the AMM allows organizations to monitor the position, direction and speed of their fleet and network assets in real-time, and access detailed information about access routes, incident scenes and structures.



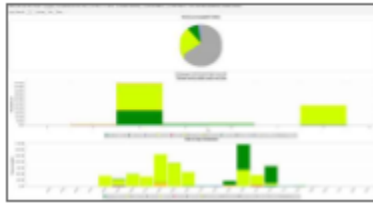
FEATURES

- Deploy, configure and remotely manage any AirLink® device
- Create, configure, manage and troubleshoot device configurations with templates
- Customize views, segment the fleet and manage multi-level user privileges
- Real-time view of entire mobile network
- Advanced reporting functionalities
- Detailed information about access routes, incident scenes and structures
- Designated zones for vehicles in fleet
- Location, speed and time based reporting
- Manage certificates for Wi-Fi or VPN on the MG90

BENEFITS

- Increases efficiency, reduces costs and supports effective maintenance and long term network performance
- Provides complete visibility and awareness of an entire mobile network
- Shortens response times and optimizes vehicle use
- Enables monitoring of driver behavior

PERFORMANCE STATS



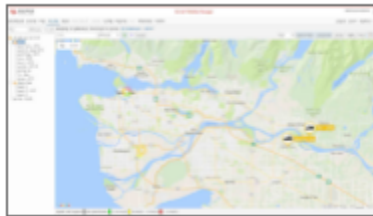
LOCATION MANAGEMENT



COVERAGE MAP/ TRAILS REPORT



AMM MAP VIEW



Example reports include but are not limited to:

1. **Coverage Maps** – fleet-wide cellular coverage maps to assess overall carrier or network performance
2. **Coverage Trails** – connectivity for individual vehicles by location
3. **Link Utilization** – time-based view of connectivity status for each active WAN link
4. **Availability Trend** – percentage of in-service time that individual gateways were accessible over-the-air
5. **Bandwidth Consumption** – volume of data received/transmitted on each network

AMM Operations Pack

The AMM Operations Pack bundles **Vehicle Telemetry** and **Asset Manager** for customers with mobile assets. The Operations Pack is now included in the core feature set of every AMM.



Asset Manager

- Know the location of your high value assets
- Manage and monitor assets from a vehicle or any desktop connection
- Monitor temperatures in drug boxes etc
- Know instantly when equipment is left behind
- Send the right equipment at the right time

Available for oMG/MG90 routers only

Vehicle Telemetry (Cable available for purchase)

- Monitor the health of your vehicle fleet
- Receive email alerts about performance problems
- Identify performance issues and prevent breakdowns

<https://www.sierrawireless.com/products-and-solutions/routers-gateways/am-amm/>

AirLink Mobility Manager (AMM)	
Asset Type	Mobile
Example Applications	Public Safety Vehicles (Law Enforcement, EMS & Fire); Transit Vehicles; Utility & Field Services Vehicles
Device & Asset Tracking	●
Remote Configuration & Firmware Upgrades	●
Alerts & Monitoring	●
Core Reports	●
Coverage Trails	●
Coverage Maps	●
Link Utilization	●
Availability Trend	●
Bandwidth Consumption	●
Event Viewer	●
Vehicle Stop	●
Speed Threshold	●
Mobility Features	
AMM Tracker: Vehicle Location	Included
AMM Tracker: Zone Monitoring	Included
AMM Operations Pack	
Asset Manager	Included
Vehicle Telemetry	Included